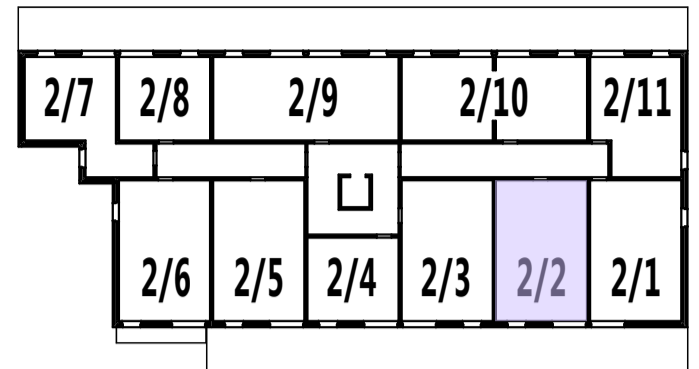


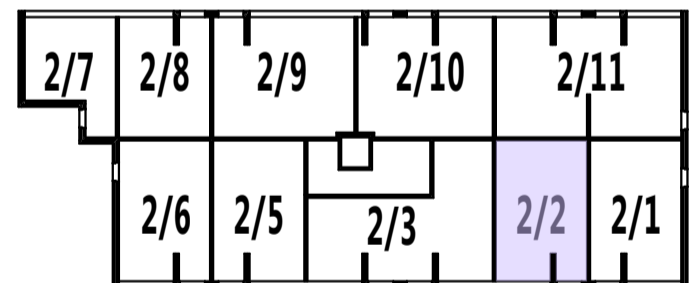
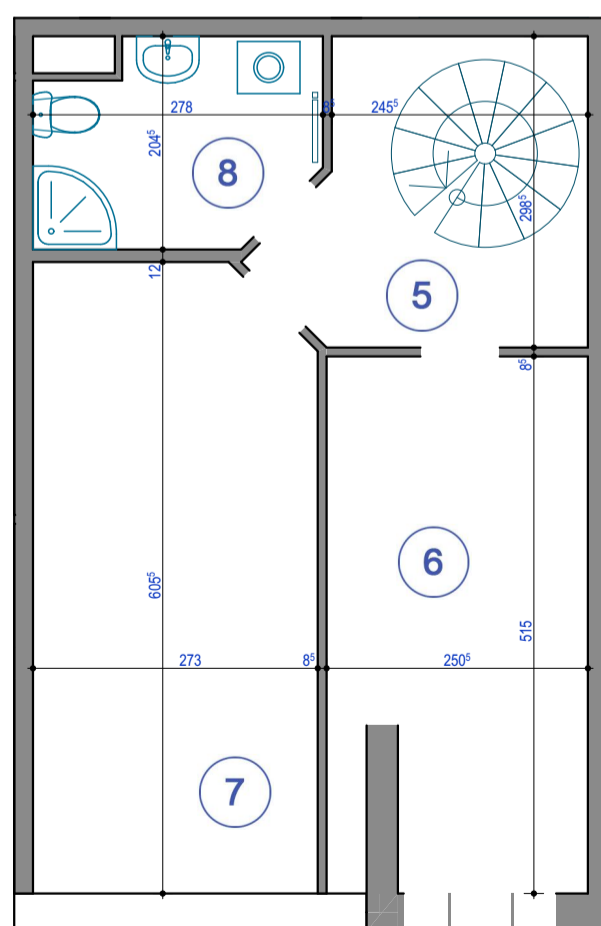
BALKON



RZUT PIETRA 2

ZESTAWIENIE POWIERZCHNI (1P):

1	SALON	25,24m <sup>2</sup>
2	ŁAZIENKA	2,60m <sup>2</sup>
3	KUCHNIA / ANEKS KUCHENNY	5,75m <sup>2</sup>
4	POKÓJ	8,63m <sup>2</sup>
		<b>42,22m<sup>2</sup></b>



ANTRESOLA

ZESTAWIENIE POWIERZCHNI (2P):

5	KORYTARZ	6,20m <sup>2</sup>
6	POKÓJ	12,31m <sup>2</sup>
7	POKÓJ	13,54m <sup>2</sup>
8	ŁAZIENKA	5,01m <sup>2</sup>
		<b>37,06m<sup>2</sup></b>

SUMA POWIERZCHNI (1P+2P)	<b>79,28m<sup>2</sup></b>
--------------------------	---------------------------