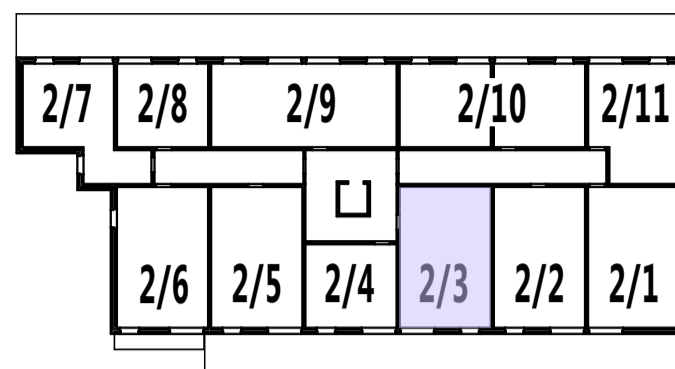


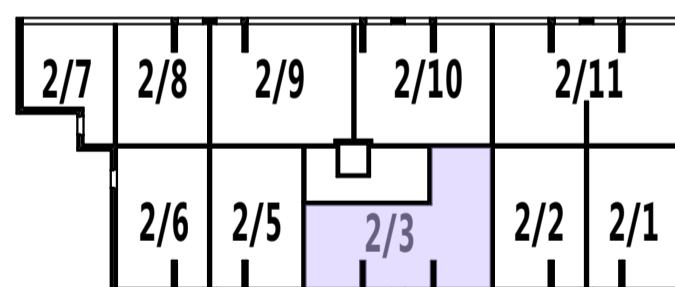
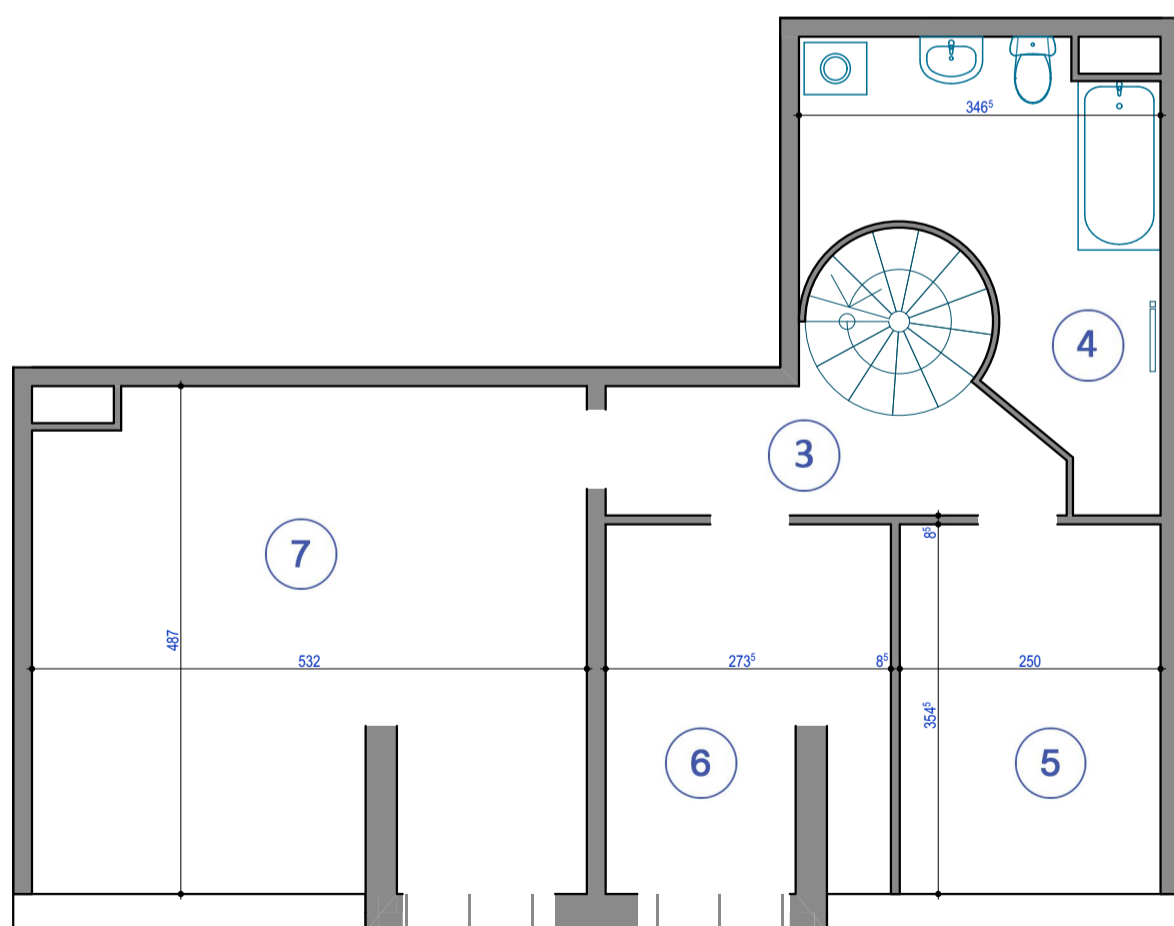
BALKON



RZUT PIETRA 2

ZESTAWIENIE POWIERZCHNI (1P):

1	SALON	33,25m <sup>2</sup>
2	KUCHNIA / ANEKS KUCHENNY	9,52m <sup>2</sup>
		<b>42,77m<sup>2</sup></b>



ANTRESOLA

ZESTAWIENIE POWIERZCHNI (2P):

3	KORYTARZ	5,69m <sup>2</sup>
4	ŁAZIENKA	9,96m <sup>2</sup>
5	POKÓJ	6,46m <sup>2</sup>
6	POKÓJ	8,88m <sup>2</sup>
7	POKÓJ	22,23m <sup>2</sup>
		<b>53,22m<sup>2</sup></b>

SUMA POWIERZCHNI (1P+2P)	<b>95,99m<sup>2</sup></b>
--------------------------	---------------------------