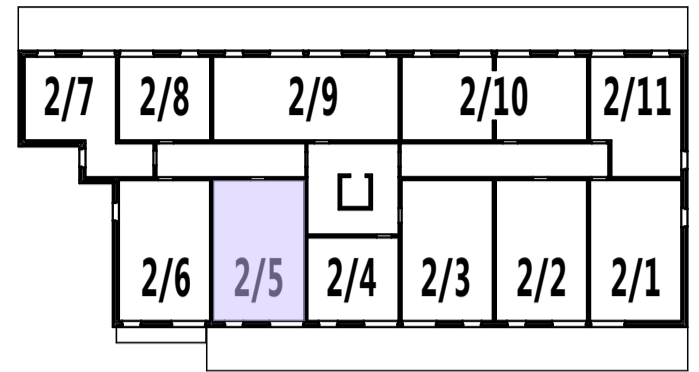


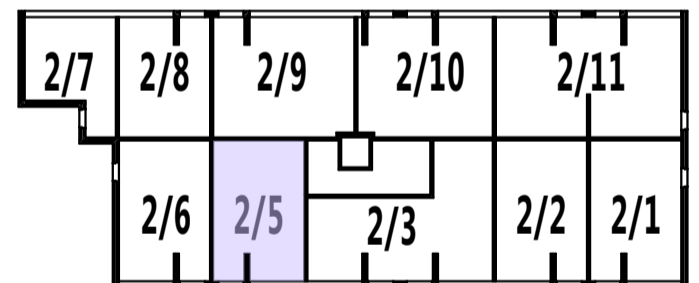
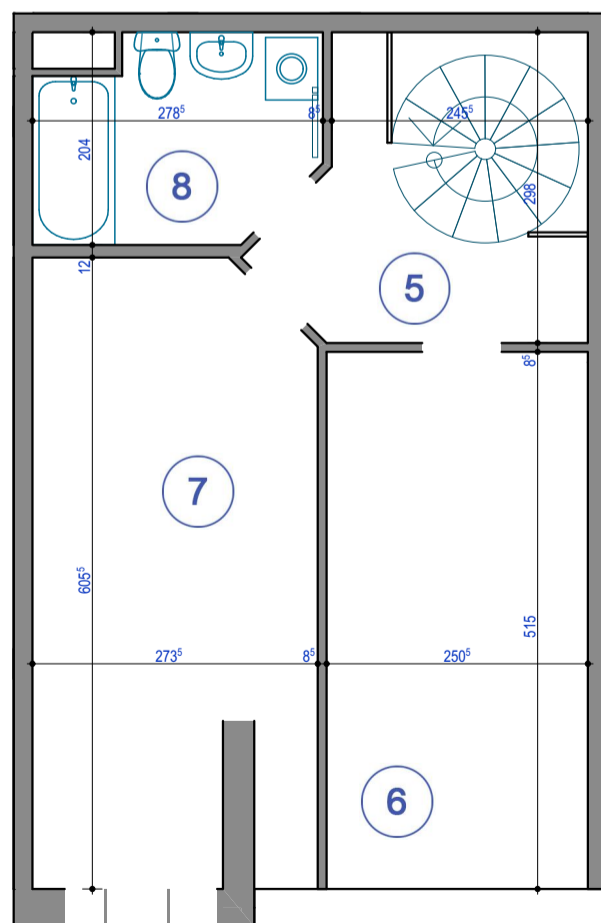
BALKON



RZUT PIETRA 2

ZESTAWIENIE POWIERZCHNI (1P):

1	SALON	25,22m ²
2	ŁAZIENKA	2,60m ²
3	KUCHNIA / ANEKS KUCHENNY	5,76m ²
4	POKÓJ	8,65m ²
		42,23m²



ANTRESOLA

ZESTAWIENIE POWIERZCHNI (2P):

5	KORYTARZ	6,19m ²
6	POKÓJ	10,51m ²
7	POKÓJ	15,38m ²
8	ŁAZIENKA	5,01m ²
		37,09m²

SUMA POWIERZCHNI (1P+2P)	79,32m²
--------------------------	---------------------------